

3.0 DEVELOPMENT PROPOSAL

3.1 Description of the Proposal

The proposal seeks development consent to deploy a new telecommunications facility.

The components of the proposed facility are as follows:

- One (1) 25 metre Optus slimline monopole;
- Three (3) panel antennas at 25m centreline elevation with 60°, 120° and 180° orientations, mounted on circular headframe;
- Remote Radio Units (RRUs) set behind panel antennas on circular headframe;
- Mast Head Amplifiers (MHAs) set behind panel antennas on circular headframe;
- One (1) Phase 8 Sandwich Panel Equipment Shelter (3m x 2.5m) colour-matched to maintenance workshop, bored piers, with 45° gabled snow roof;
- Ancillary equipment, including feeders to be run internally from the equipment shelter to the panel antennas, RRU's, and MHA's;
- Power to be supplied via new trenched conduits from the existing maintenance workshop; and
- Transmission to be obtained via new trenched conduits containing optic fibre from existing Telstra optic fibre transmission conduits located southwest of the subject site.

Refer to Figures below and Appendix B for Drawings.

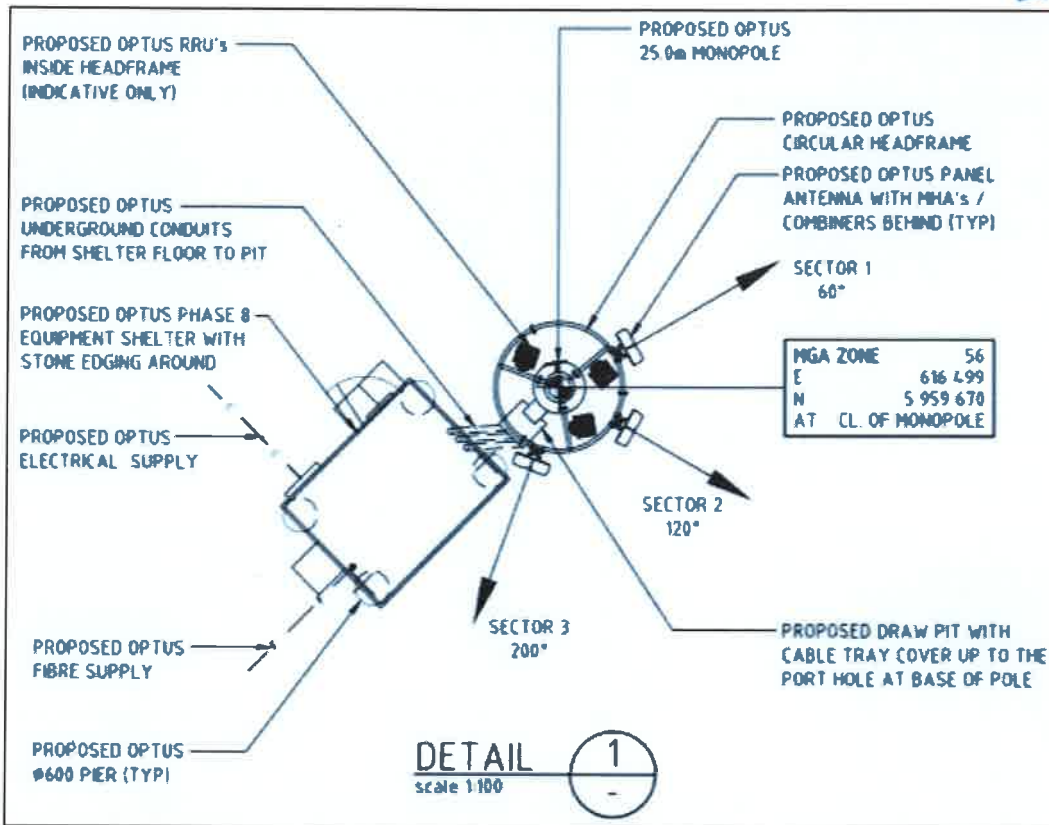


Figure 4: Draft Site Layout Extract (Source: Catalyst ONE)

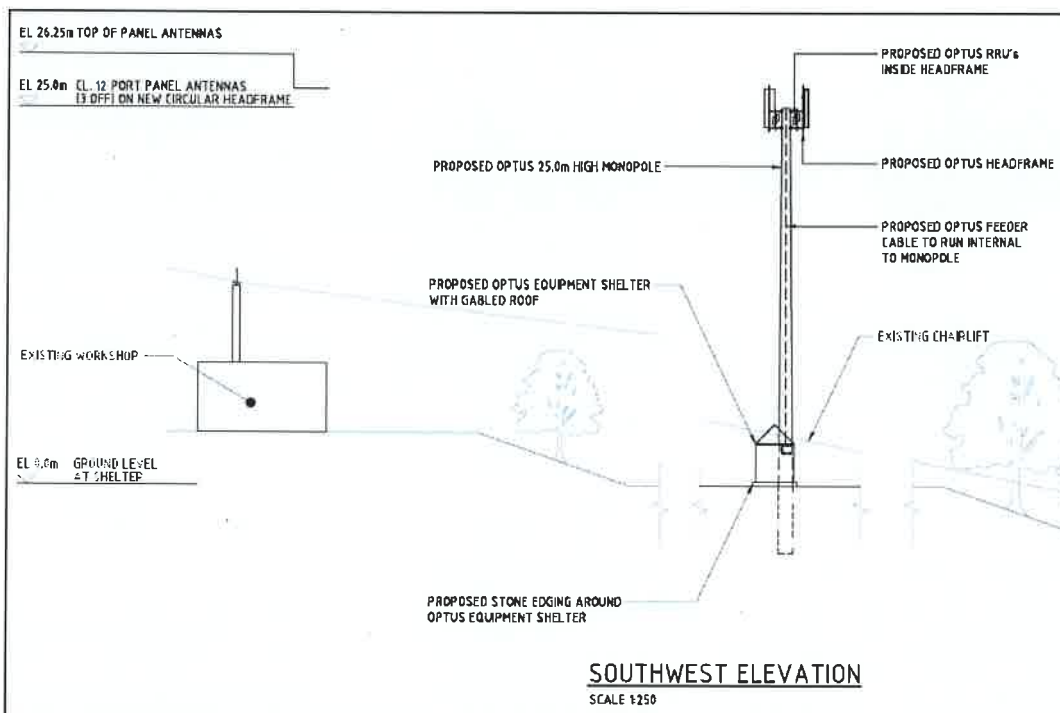


Figure 5: Draft Site Layout Elevation Extract (Source: Catalyst ONE)

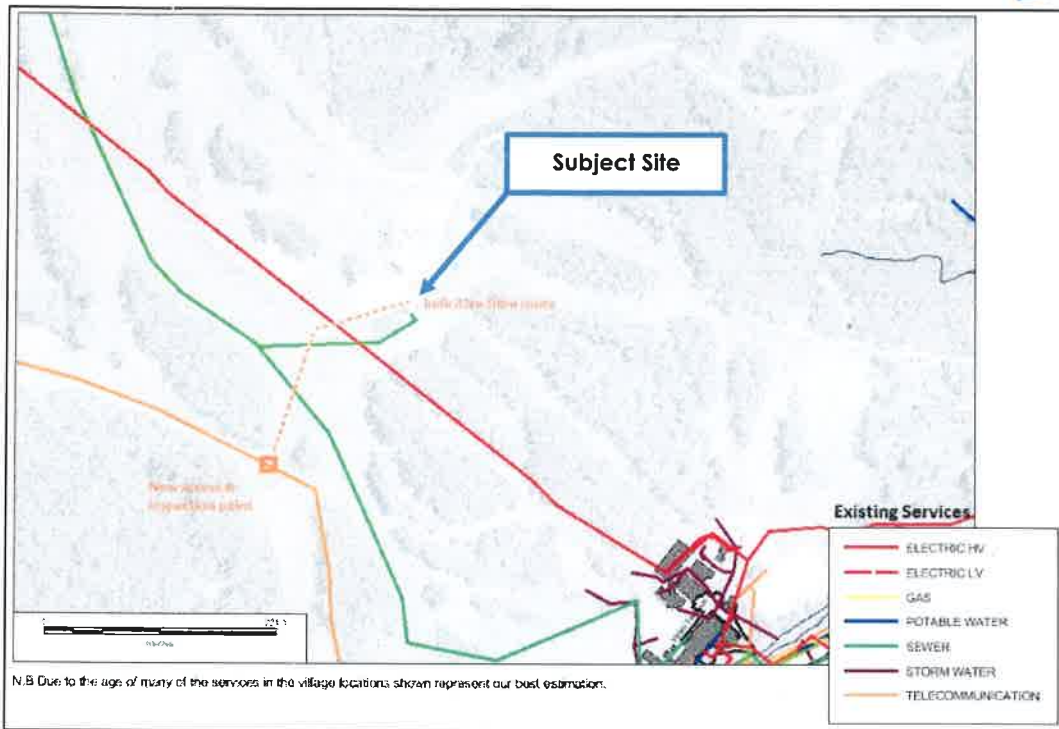


Figure 6: Proposed Optic Fibre Transmission Run Extract (Source: Catalyst ONE)

3.2 Construction Access

Access to the subject site is via Alpine Way, into Friday Drive, Thredbo Village. The subject site can be accessed by the Cat Shed 4WD access track from the rear of the KT Pty Limited Offices. No road closures are required during the installation of the facility.

3.3 Operational Access

Mobile phone base stations are unmanned, of low maintenance and remotely operated. As such, operational visits to the facility are expected to be low. Once constructed, the facility will not be fenced as a means of preserving the amenity of the surrounding area. The existing equipment shelter will be securely locked and no climbing devices will be installed on the monopole, preventing public access to these areas. Access to the top of the monopole will be via cherry picker and by qualified personnel only.

3.4 Construction Plant and Equipment

The installation of the facility would require the use of:

- One mobile crane
- One boom lift cherry picker
- Approximately four utility trucks

3.5 Construction Process

The construction process would be as follows:

- Excavate footing for slimline monopole;
- Excavate trenches for power supply and transmission;
- Install steel and cast foundations;
- Install the 25m slimline monopole;
- Install cables, panel antennas, remote radio units, mast head amplifiers, and other ancillary equipment; and
- Associated electrical works.

3.6 Construction Workforce and Working Hours

Construction would be undertaken in accordance with Kosciusko Thredbo (KT), and NSW Department of Planning and Environment (DPE) recommended standard hours of operation permitting construction work.

3.7 Construction Cost

The proposal would cost approximately \$186,500.

3.8 Construction Timing

It is anticipated that works would be completed approximately four (4) weeks after the commencement, given ideal working conditions.

It is expected that the facility will be deployed at the beginning of April 2015, with the intention of beginning operational for June 2015 and the winter ski season.